



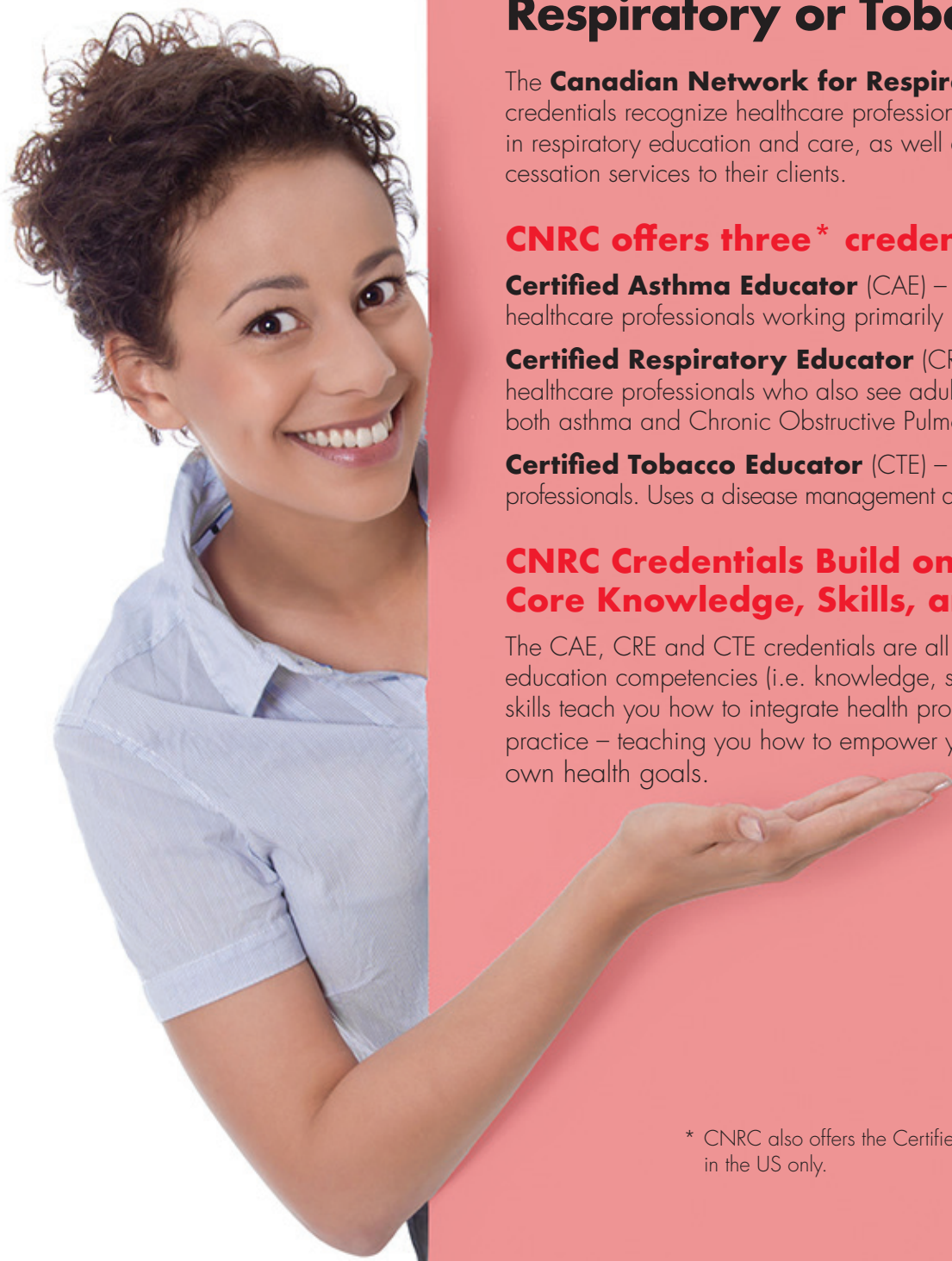
Réseau
canadien
pour
les soins
respiratoires



Canadian
Network
for
Respiratory
Care

Become
a
Certified
Respiratory
or
Tobacco
Educator





Become a Certified Respiratory or Tobacco Educator

The **Canadian Network for Respiratory Care (CNRC)** credentials recognize healthcare professionals who provide excellence in respiratory education and care, as well as tobacco prevention and cessation services to their clients.

CNRC offers three* credentials:

Certified Asthma Educator (CAE) – Recommended for those healthcare professionals working primarily in paediatrics.

Certified Respiratory Educator (CRE) – Recommended for those healthcare professionals who also see adults in their practices. Includes both asthma and Chronic Obstructive Pulmonary Disease (COPD).

Certified Tobacco Educator (CTE) – Recommended for all healthcare professionals. Uses a disease management approach to tobacco use disorder.

CNRC Credentials Build on Core Knowledge, Skills, and Abilities

The CAE, CRE and CTE credentials are all based on foundational health education competencies (i.e. knowledge, skills and abilities). These core skills teach you how to integrate health promotion and education into your practice – teaching you how to empower your clients to manage their own health goals.

* CNRC also offers the Certified COPD Educator (CCE) credential in the US only.

Steps to Certification

1 Qualify
You must have a degree or diploma in a recognized healthcare profession, with a scope of practice that includes counselling.

2 Complete Courses
You must successfully complete a CNRC-accredited foundational health education course as well as the required disease specific courses.*

CAE – Foundational Health Education + Asthma

CRE – Foundational Health Education + Asthma + COPD

CTE – Foundational Health Education + Tobacco

**Educators who wish to challenge more than one CNRC credential do not need to retake the foundational health education course.*

3 Pass Examination
The computer-based, multiple choice exams are offered at proctored exam centres throughout North America and internationally.

4 Recertify
CAEs, CREs and CTEs must recertify every five years by submitting an application that shows a combination of teaching and learning hours totalling 500 hours over the five-year period or by re-taking the exam.

The Competencies

Foundational health education competencies include:

- Health Promotion and Education
- Communication
- Educational Interventions
- Resource Management
- Professional Practice
- Program Evaluation

Asthma education competencies include:

- Asthma Definition, Epidemiology, Pathogenesis and Pathophysiology
- Asthma Diagnosis and Evaluation
- Asthma Management –
 - Asthma Control & Self-management
 - Environmental Control
 - Pharmacotherapy
 - Immunotherapy, Alternative Therapies, Acute Asthma, Follow-up

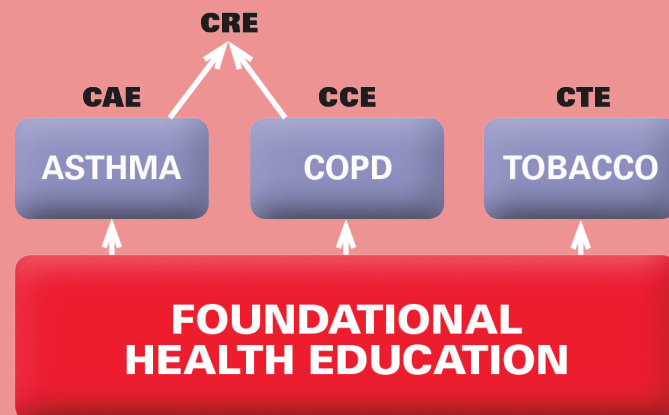
COPD education competencies include:

- COPD Definition, Epidemiology, Pathogenesis and Pathophysiology
- COPD Diagnosis and Evaluation
- COPD Management –
 - Self-management
 - Smoking Cessation
 - Pulmonary Rehabilitation
 - Oxygen Therapy
 - Non-invasive Mechanical Ventilation
 - Surgical Interventions
 - Alternative Therapies
 - Antitrypsin Replacement Therapy
 - Acute Exacerbations of COPD
 - End-of-life and Palliative Care
 - Pharmacotherapy

Tobacco education competencies include:

- The Tobacco Epidemic
- Tobacco Use Disorder and Other Substance Use
- Tobacco Control
- Assessment and Interventions
- Pharmacological, Alternative and Complementary Treatment
- Client-Centred Care
- Tobacco Programs and Systems

CNRC Pathway to Credentials



Foundational Health Education Courses

Alberta Health Services Foundational Health Educator Workshop

780-361-1381
www.albertaquits.ca

Manitoba Tobacco Reduction Alliance (MANTRA) Foundational Health Education Workshop

204-784-7030
www.maintrainc.ca

Pear Healthcare Solutions Inc. Foundational Health Education Online Program

416-236-9555
www.healthlearning.ca

RespTrec Lung Association of Saskatchewan Chronic Disease Management Educator Course

306-343-9511
www.resptrec.org

Centre for Addiction and Mental Health (CAMH) The TEACH Project Foundational Health Educator Workshop

416-535-8501 ext 31600
www.nicotinedependenceclinic.com

Respiratory Education Courses (Asthma & COPD)

Pear Healthcare Solutions Comprehensive Asthma and COPD Certificate Preparation Course

416-236-9555
www.healthlearning.ca

RespTrec Lung Association of Saskatchewan Asthma, COPD & Respiratory Training and Educator Course

306-343-9511
www.resptrec.org

French Language Course Réseau Québécois d'Éducation en Santé Respiratoire (RQESR) Formation en asthme et MPOC

418-650-9500
Toll Free in Quebec: 1-877-441-5072
www.rqam.ca

International Course Delphi HSA Inc. HSA-Respiratory Educator Program

289-914-0217
www.delphihsa.com

Tobacco Education Courses

Alberta Health Services Alberta Quits Learning Series

780-361-1381
www.albertaquits.ca

Manitoba Tobacco Reduction Alliance (MANTRA) Tobacco Educator Workshop

204-784-7030
www.maintrainc.ca

Centre for Addiction and Mental Health (CAMH)

The TEACH Project
(Training Enhancement in Applied
Cessation Counselling and Health)

Core Course
416-535-8501 ext 31600
www.nicotinedependenceclinic.com

Please contact
CNRC for additional information
about courses at
www.cnrhome.net or
phone **905-880-1092** or
toll-free at **1-855-355-4672**.





**Réseau
canadien
pour
les soins
respiratoires**

**Canadian
Network
for
Respiratory
Care**

16851 MOUNT WOLFE ROAD
CALEDON ON L7E 3P6
905 880-1092 OR 1 (855) 355-4672
www.cnrchome.net